

NOFACTORY

THE LOW-TECH R&D WORKSHOP

- > Novactory is a research and development workshop specialising in low-tech. It designs and markets innovations that meet the economic, ecological and social challenges of today and tomorrow.

Low-tech (as opposed to high-tech) refers to technological systems that are simple, essential and sustainable. It's an exciting field of research combining innovations with optimisations of existing solutions. At Novactory, we base our low-tech approach on three principles :

ESSENTIAL

Our innovations respond to an identified and relevant need. They make new uses possible or improve existing solutions.

SIMPLE

Our solutions are simple and usable. We want users to take up our innovations and come up with new applications of their own.

SUSTAINABLE

Locally designed, repairable, agile and robust, Novactory's innovations are intended to have minimal environmental impact.

Social concerns are also important to us, which is why we have chosen the Haute-Vallée de l'Aude in Occitanie as our location: a rural area experiencing a revival at the heart of a pioneering and dynamic ecosystem in the field of eco-construction.



BLACKSHEEP TRIBES

A GROUP LIKE NO OTHER

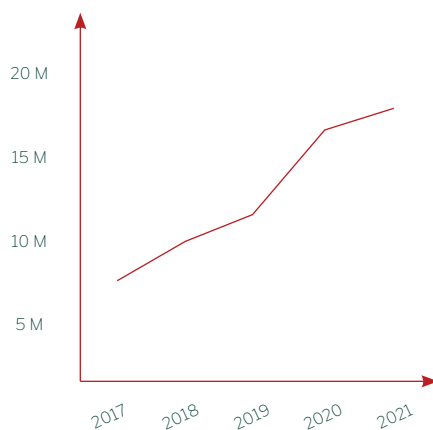
- > **Blacksheep Tribes is present as a group in Belgium and France and started its activities in 2008. It is owned by two public utility foundations and consists of eight companies working in a variety of fields, including IT consultancy, consulting and management, research and development, art and culture, agriculture, construction, well-being at work and citizen entrepreneurship. The group is proud to now have 160 employees.**

What the group's different entities have in common is that they all demonstrate that another way of doing business is possible, regardless of the field. Using innovative management and governance models, the group has put people and meaning at the centre of its concerns.

The group's turnover was 17 million euros in 2021.

However, for Blacksheep Tribes profit is only a means, and definitely not an end in itself. What really drives us is the social dimension of what we do, sustainability, ecological responsibility, employee fulfilment and well-being

A GROWING TURNOVER



THE GROUP



CO'MET®

A NEW GENERATION OF METALLIC CONNECTORS

BASED ON SIMPLE AND EFFECTIVE OPERATING PRINCIPLES, CO'MET® PATENTED INNOVATIONS MAKE WOODEN STRUCTURES EASIER TO ASSEMBLE. OUR RANGES OF CONNECTORS, FEET, HEIGHT-ADJUSTERS AND ACCESSORIES ARE EASY TO USE AND HIGHLY ACCESSIBLE.

APPLICATION AREAS

SUBSTRUCTURES AND BASES

Terraces
Cabins
Pontoons...



FRAMEWORKS

Pergolas
Carports
Chalets
Tiny houses...



FURNITURE

Garden tables
Benches
Planters
Compost bins...



FAST

Co'Met® products make it possible to assemble structures in record time. You can even pre-assemble your creations in the workshop, saving extra time during construction.

The adjustment and final tightening of structures created with Co'Met® (in particular support frames) take place at the end of the assembly of the support structure.

EASY

Co'Met® products simplify the making of structural frameworks: our connectors' 360° orientation around an axis makes complex angles easy, adjusting and tightening structures is straightforward, and installation on uneven or sloping terrain is simple... In short, assembling structures with Co'Met® is child's play!

RESISTANT

Co'Met® products make it possible to create structures that are resistant to pressure damage and tearing. Our metal connectors have been designed to support a load of more than 5 tons per foot*.

Made of steel, the Co'Met® system is designed to last – for at least 60 years**!

* Resistance test under load carried out by the company CE BTP on 5 January 2022.

** According to the American Galvanizers Association, the corrosion resistance of galvanised metals is as follows: « in an industrial environment: 65 years; in a tropical environment: 70 years; in a suburban environment: 85 years; in a rural environment: 120 years.»

RESPONSIBLE

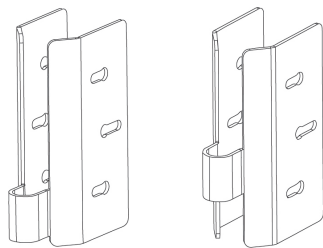
Co'Met® products are sustainable over time and meet a wide variety of user needs. They are multi-purpose, easy to replace, removable and endlessly reusable.

As part of our CSR policy, we prioritise French and European suppliers. Our packaging is ultra-rationalised, recyclable, and free of plastic material.

CO'MET® PRODUCTS

TECHNICAL INFORMATION

> CONNECTORS A - B

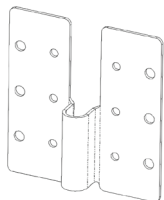


Available in **galvanised** or **stainless steel**

Available in : **2,5 mm** (468 g)

Dimensions: **145 × 51 × 96 mm**

> OMEGA CONNECTORS

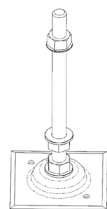


Available in **galvanised** or **stainless steel**

Available in : **2,5 mm** (391 g)

Dimensions: **145 × 135,6 × 29 mm**

> FOOT

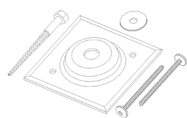


- 1 base
- 1 threaded rod
- 1 M16 HM nut, 3 M16 HU nuts
- 4 M16 washers

Dimensions: **110 × 110 × 244 mm**

Weight : **769 g**

> HEIGHT-ADJUSTING KIT



- 1 base
- 1 lag screw 8 × 80 TH
- 1 M8 LL washer
- 2 hinge screws 6 × 80

Weight : **365 g**

> SLEEVE



Dimensions: **32 × 191 mm**

Weight : **354 g**

